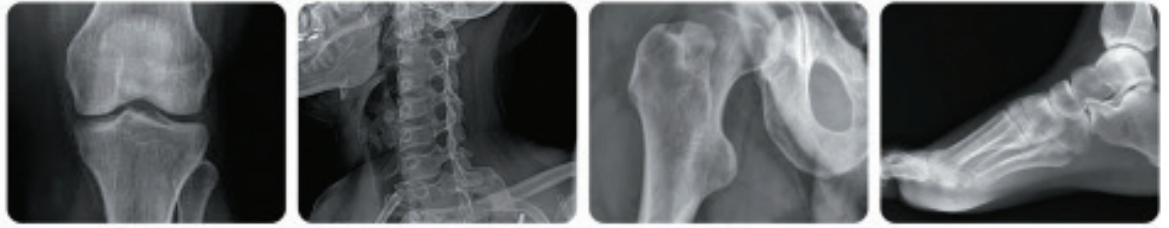


# Tiger DR-PW Orthopedics

Acquire | Store | View | Share

Premium Gadox Wired & Wireless 12x12, 14x17 & 17x17 Flat Panel Detectors



High Quality, yet Simple and Cost-effective - True Premium Gadox Solution

Tiger DR-PW 12x12, 14x17 and 17x17 are Premium Gadox cassette-size wired or wireless flat panel detectors and the wireless panels do not require a cable connection with an X-ray generator to synchronize the signals.

These ultra thin and lightweight detector allows digitizing without modification of existing conventional imaging systems. Cable free functionality with the wireless panel gives the user a true wireless detector at a fraction of the cost.

- *Fast image acquisition time*
- *Light and slim design*
- *Internal Image Storage*
- *Web Viewer - Direct image review from any mobile devices*
- *Long Battery life time*
- *3 Year Panel Warranty*
- *Direct to PC - Truly Wireless Setup*
- *TigerView software with Orthopedic specific measurements*
- *Directly integrates with TigerView software.*

Call us for an in-office demo today.

**1-800-385-9593**

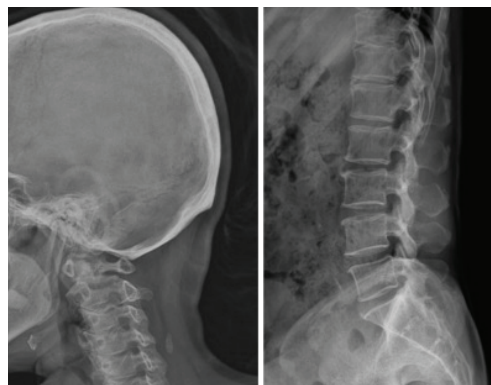
# Tiger DR-PW Medical

Premium Gadox Wired & Wireless 12x12, 14x17 & 17x17 Flat Panel Detectors

## SPECIFICATIONS

Sensor	
Sensor	a-Si TFT Array
Conversion Screen	Csl: TI / Premium Gadox
Image Data	16bits
Limiting Resolution	3.5 lp/mm
12x12 Active Area	12 x 12 in (287x287 mm)
14x17 Active Area	14 x 17 in (350x430 mm)
17x17 Active Area	17 x 17 in (430x430mm)
12x12 Sensor Pixel	2048 x 2048
14x17 Sensor Pixel	2560 x 3072
17x17 Sensor Pixel	3072 x 3072
Image Quality	
Data Transfer Time	Less than 1 second
Internal Storage	Up to 200
Communication Interface	
Image Acquisition Time	3-5 sec. (approx)
Data Transfer Time	Less than 1 second
Trigger Mode	AED (Auto Exposure Detection), Manual Trigger
Calibration Mode	ACC (Auto Calibration Control), Manual Calibration
Image Transmission	Gigabit Wi-Fi IEEE 802.11

Environmental	
Operating	
Temperature Range	10 - 35°C
Humidity Range (non-condensing)	20% - 75% RH
Storage	
Temperature Range	-10°C - 60°C
Humidity Range	10% - 90% RH
Mechanical	
12x12 Dimensions	308.5 x 319.5 x 15mm
14x17 Dimensions	385 x 460 x 15mm
17x17 Dimensions	460 x 461 x 15mm
12x12 Weight	4.2 lbs w/battery
14x17 Weight	6 lbs w/battery
17x17 Weight	7 lbs w/battery
Power	
Battery Performance	10 hours
AC Power	
Power Supply	100 - 240V AC
Frequency	50/60 Hz



For complete product information, visit [televeresystems.com](http://televeresystems.com)